

## ***Fitting and Discharging Instructions*** ***E-Flex Easy Flexitank EC41***



# Container Selection...



- Ensure that only containers manufactured according to ISO 668 norms are to be used.
- Ensure that containers have been weight tested to a minimum of 28,000kg are used.
- Ensure that containers are no older than 5 years.
- Ensure that containers are clean, structurally sound and in excellent condition.
- Ensure there are no repairs on side walls and there is no damage to the floor.
- Use foodgrade containers only that are free of any odor.
- Ensure that there are no insects or soil or contaminants that may cause customs issues at the destination.



# Container Inspection...

LiquA

- Sweep the container carefully with a broom.



- Ensure that the door bolts are silicon covered.



- Ensure that nails, sharp and rough objects that may damage/puncture the flexitank are removed.
- Cover uneven areas on the walls and on the floor with duck tape



# Container Lining...

**LiquA**

- If you do not feel comfortable with the surface of the container, line the container with carton board.
- Lining the container is recommended for rough journeys. Line the container floor and side walls with carton board.



# Contents of the Box...

# LiquA



Open the E-flex box and ensure that the following are in the package:

1. E-flex
2. Warning labels
3. Adhesive Tape

**The box will be used as door protection board.  
DO NOT throw it away!**



# Positioning the E-flex...

# LiquA



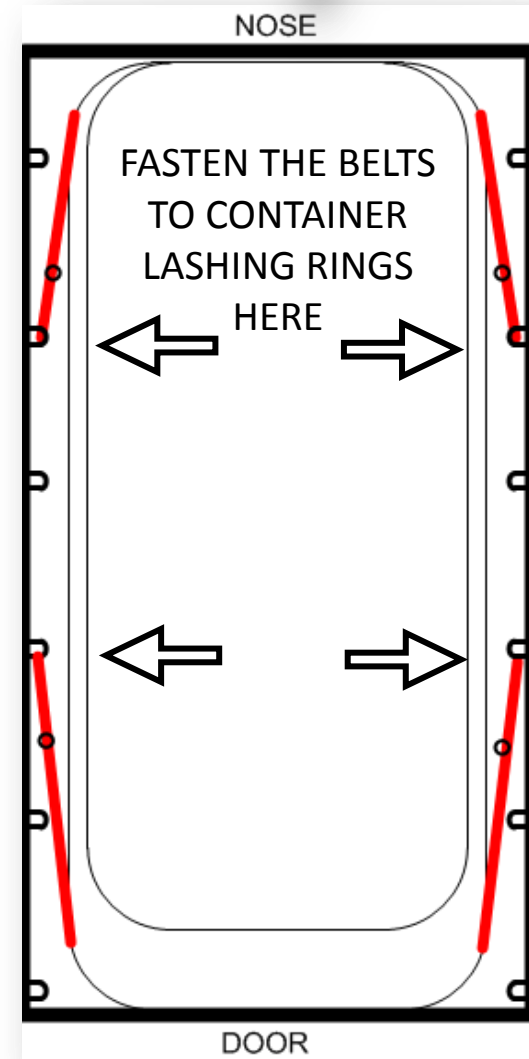
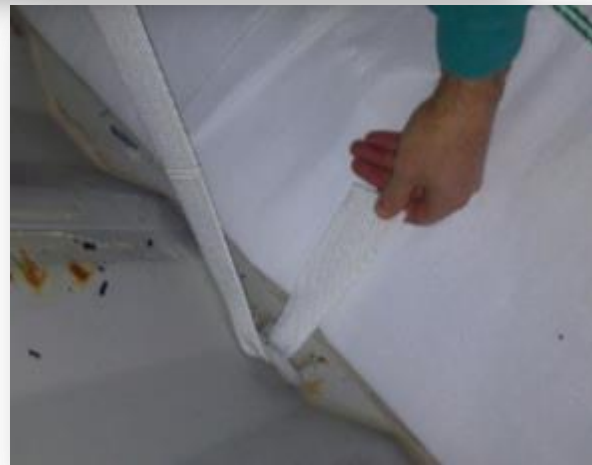
- Unroll the E-flex into the container.
- Do not to step on the E-flex while unrolling.
- Do not to wear shoes during the fitting operation.
- The door end of the E-flex should be **25cm** away from the outer end of the container.



# E-flex Flexible Harness...

Liqua

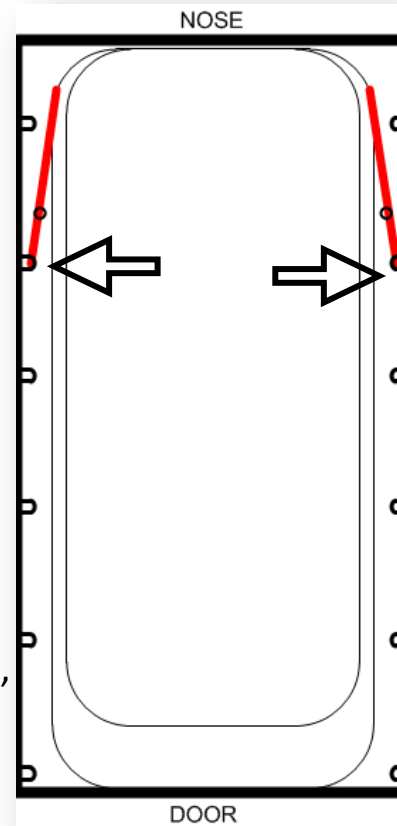
- E-flex must be fastened to the lashing rings in the container to avoid movement during transportation.



# Belt Tying...

# LiquA

## FRONT OF THE CONTAINER (NOSE SIDE)

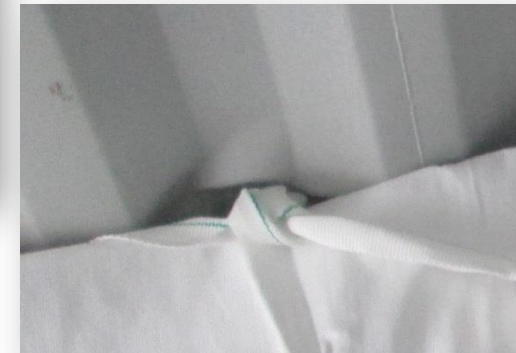


Joining  
Knot

- While the end of the flexitank is still resting on the front wall and the strap is “taut but not tight”, tie the lashing strap to the first lug/lashing ring past the joining knot.
- **IMPORTANT:** In the case of a non-standard container, if the lashing strap cannot reach the first lug/lashing ring past the joining knot, tie the lashing strap of the first available lug that allows the flexitank to rest against the front wall as described above.

**NOTE: The lashing straps must NOT restrict the flexi tank from expanding into the front wall. This may cause capacity loss.**

**Tying must be done by two operators!**





# Belt Tying...

# LiquA

**FRONT OF THE CONTAINER (NOSE SIDE); 26000Lt Version**



The 26,000Lt capacity E-flex is longer than smaller capacity E-flexes. Follow the same instructions at the previous page but this time ensure that the longer part of the flexitank leans on the front wall as shown at the pictures.

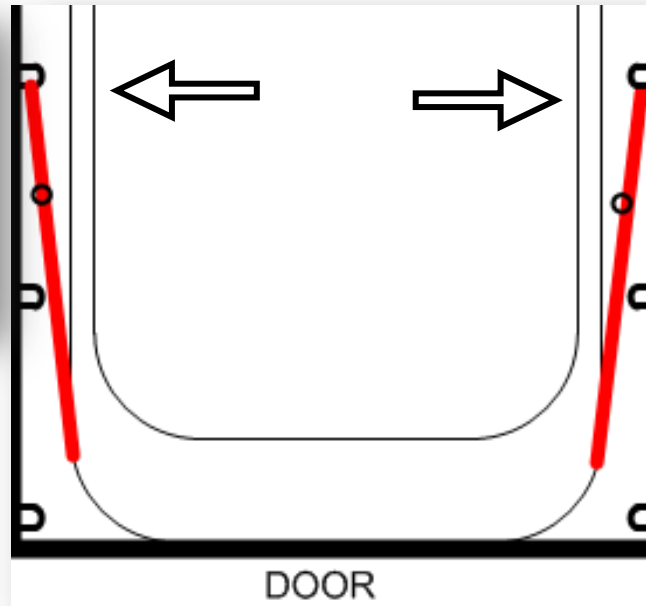


# Belt Tying...

**LiquA**

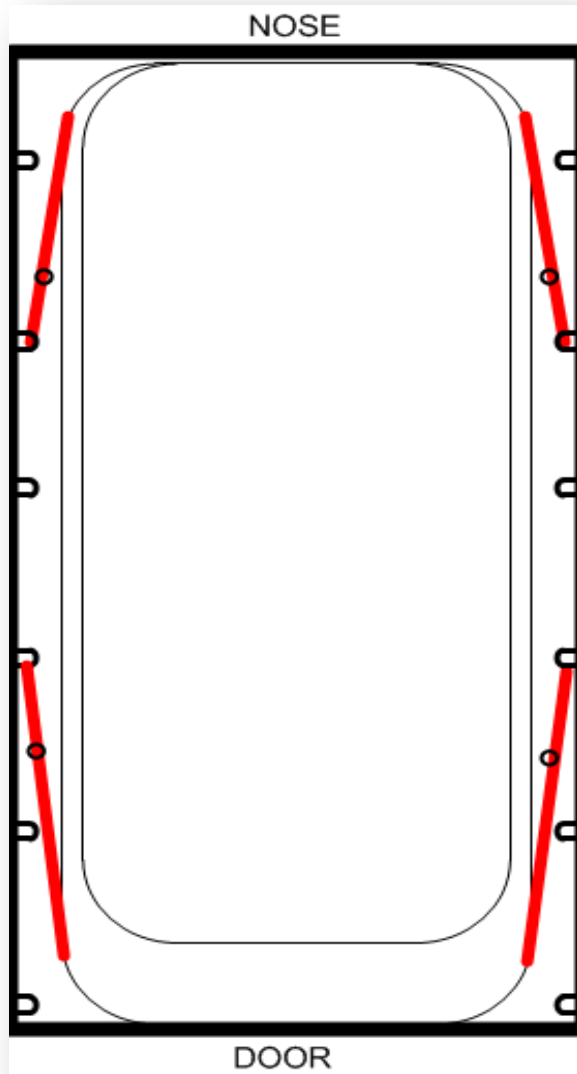
## BACK END OF THE CONTAINER (DOOR SIDE)

- Repeat the harness tying on the door side.
- Ensure the straps are taut but that the corners of the E-Flex are not lifted off the floor by the tightened straps



# Belt Tying...

*LiquA*



# Door Protection...



While the flexible harness prevents any flexitank movement, the flexitank carton should be collapsed and used as protection from any sharp objects on the door.

The box will be used as a door protector. Collapse the box as shown. There are two options for using the collapsed carton. The first is hanging the carton from the doors. The second is inserting the collapsed carton between the filled flexitank and the door.





# Door Protection

*Liqua*

## Recommended Door Protection Method

- Cut the board into two pieces from the joint corners.



- Suspend the boards to the door closing bars.





# Door Protection

**LiquA**

- Fix the cut pieces of the board to the door by the provided adhesive tapes.



- Repeat the same to the door on the right.



# Check List...



- Fill in the provided Check List and stick it to the door on the right hand side.



# *Warning...*



**IMPROPER FITTING MAY CAUSE CAPACITY PROBLEMS, INNER LAYERS MAY GET STUCK AND STRETCH. THIS MAY CAUSE SEVERE LEAKINGS. ONLY TRAINED AND LICENSED OPERATORS ARE ALLOWED TO FIT OUR FLEXITANKS.**

**IF FITTING OPERATION HAS BEEN PERFORMED AT ANOTHER LOCATION, PLEASE ENSURE THAT THE E-FLEX HAS NOT MOVED DURING LOCAL TRANSPORTATION.**

# Coupling...

*LiquA*

Our standard valve is 3" male camlock. Upon request 2" reductor is available. According to your 2 or 3 inch preference you will need to have a **female cam-lock** coupling.



***Ready For Filling...***

***LiquA***





# Coupling...

# LiquA



- Break the hygiene seal.
- Remove the dust cap.
- Couple the hose.
- Open the valve.
- Unroll the bonnet.



# Filling...

**LiquA**

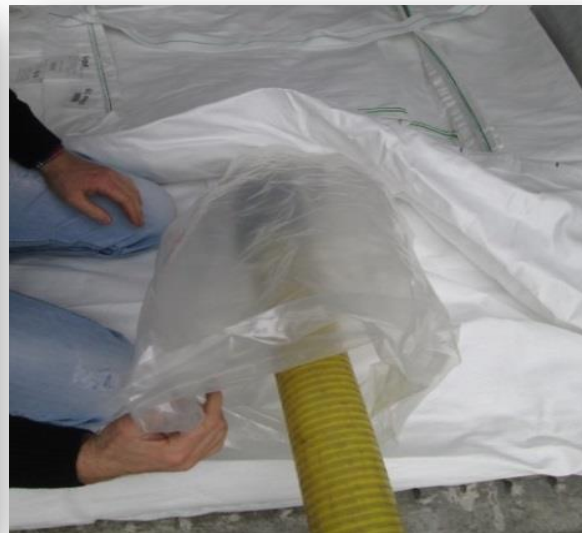
- Start loading the E-flex.
- **WARNING:** Ensure that the start up pumping speed does not exceed 300 lt /min until the E-flex rises to an approximate height of 30cm (roughly the first 2-3,000 litres) , then increase the speed up to 800lt/min. Please ensure that the filling stations follow this instruction carefully.



# Filling...

# LiquA

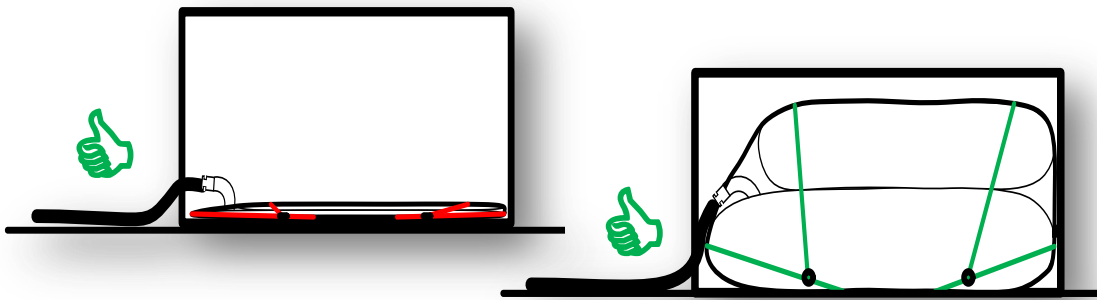
- Ensure that you have chosen a light weight filling hose.
- Couple the hose to the valve.
- Make sure that protective plastic cover `bonnet` is unrolled. It will avoid possible contaminaton due to spilage while decoupling.



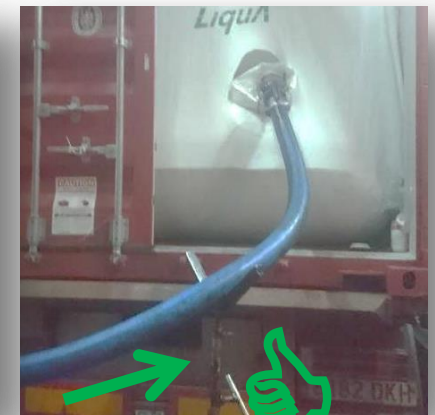
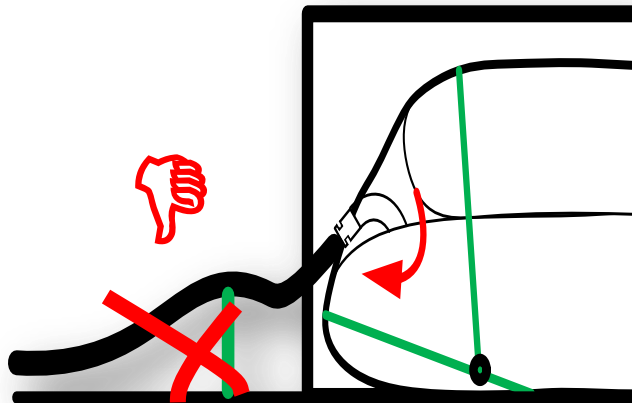
# Filling...

# LiquA

- Support the hose from the right point. Ensure that the hose is NOT put under any stress during the entire filling period.



- Hose support must be done very carefully. Support shall not create any torsion/stress over the valve.



# Filling...

# Liqua



After Loading;

1. Close the valve.
2. Ensure that the pin of the valve is locked.
3. Remove the hose.
4. Fasten the dust cap.





# ***Bonnet Closure...***

***LiquA***

E-flex has two protective bonnets around the inlet to prevent contamination and to act as secondary containment in case of an incident.

**Ensure that Bonnet is well tied according to our instructions.**



# Bonnet Closure...

# Liqua



The Protective Bonnet has two individual layers of plastic film.

Both layers must be tied **separately**.

1. Push back the outer bonnet to expose the inner bonnet for easy operation.
2. Twist the full length of the inner bonnet. Ensure that minimum amount of air/space left in the bonnet.
3. Make a tight knot, as close as possible to the valve.
4. Unroll the outer bonnet.
5. Twist the full length of the inner bonnet. Ensure that minimum amount of air/space left in the bonnet.
6. Make a tight knot, as close as possible to the valve.

# Warning Labels...

# Liqua

Attach the warning labels on the side walls and the doors of the container as shown



LEFT DOOR



RIGHT DOOR



LEFT WALL

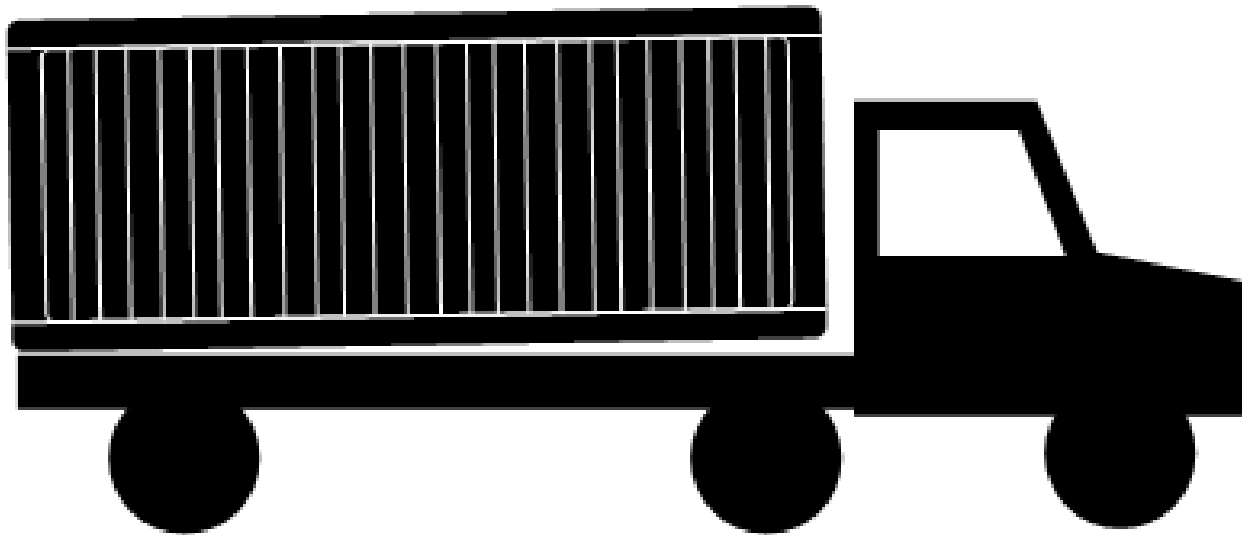


RIGHT WALL

# Discharging...

*LiquA*

- Please ensure that the front of the container is in a higher position compared to the back, so that it will have the necessary gradient to facilitate the discharge.



# *Discharging...*

*LiquA*

- We have 2 or 3 inch valve alternatives.
- Valves have male cam-lock connection.
- According to the 2 or 3 inch preference you will need to have a female camlock coupling.





# Discharging...

# Liqua

- To start discharging; both inner and outer bonnets around the elbow are untied.
- Camlocks are coupled



# Discharging...

**LiquA**

- With the help of elbow valve design, the hose isn't suspended anymore.
- Easy work, time saving
- Use a pump to decant the flexitank



# Discharging...

**LiquA**

- Untie the four lashing straps attach to the container (shown in red below) that hold the flexitank harnesses in place
- This will allow the flexitank to be folded up
- When the harness lashing straps are loose, the flexitank should look the same as the right hand picture below



# Discharging...

**Liqua**

- After pumping all the product out, lift the sides of the E-flex as shown in the pictures.





# Discharging...

**LiquA**

- Roll-up the E-flex flexitank towards the doors pushing the liquid towards the outlet in the process.





# Discharging...

**LiquA**

- The E-flex should be empty and ready for recycling at this point.



**LiquA**

***Thank you for choosing  
E-Flex Easy Flexitank***

